

CAMRECORD-SPRINTER SERIES

Sprinter-HD

High-Speed Video Camera



TROUBLESHOOTING

RESEARCH

SCIENTIFIC

- 3.500 fps with 1280x860 pixels
- Standalone operation
- SSD backup storage up to 1 TB
- fast 16 GB camera memory
- TimeViewer user software included
- wireless control via tablet PC

Sprinter-HD High-Speed Video Camera

Optronis

Make time visible

DESCRIPTION

Sprinter-HD of the CamRecord-Sprinter series is a high-speed camera with integrated frame memory. Various trigger and synchronization features makes the camera an ideal tool for research and industrial applications. The camera is controlled by TimeViewer software via GigE interface or WiFi connection.

PERFORMANCE (EXAMPLES)

Resolution (H x V)	Framerate	Recording time
1280 x 860	3.504 fps	4.4 s
1280 x 720	4.168 fps	4.4 s
1280 x 4	128.514 fps	25.78 s
640 x 480	6.168 fps	9.0 s
384 x 240	11.862 fps	15.7 s
256 x 192	14.548 fps	24.0 s
256 x 4	128.514 fps	122.8 s

INTERFACES

Trigger input (TI)	TTL, 3.3 - 5 V, optically isolated, recording of sequence
Synchronisation input (SI)	TTL, 3.3 - 5 V, optically isolated, frame synchronization
Synchronisation output (TO)	TTL, 2.0 - 4.0 V, optically isolated, frame synchronous output signal
Programmable output (PO)	TBD
HDMI	video output
USB	WiFi dongle
GigE	control and download

MODELS

Sprinter-HD-M	monochrome Camera
Sprinter-HD-C	color Camera

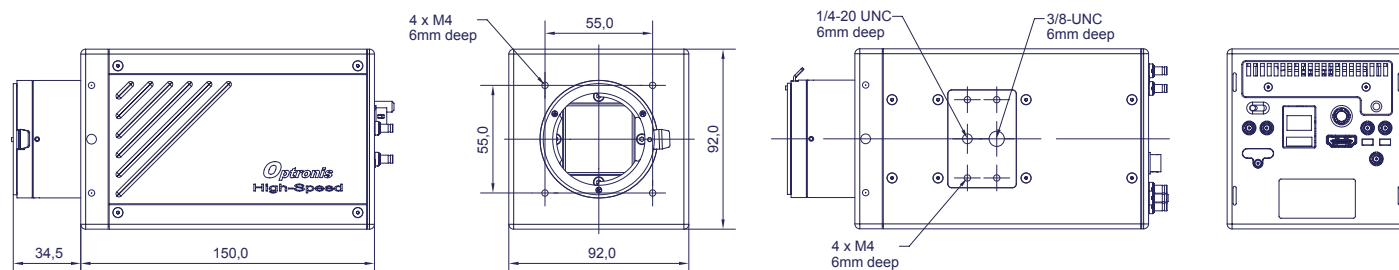
SPECIFICATIONS

Sensor resolution	1280 x 860
Frame rate @ max. sensor res.	3.504 fps
Memory	16 GB internal
Image sensor	CMOS, Global Shutter
Exposure time	2 μ s - 1/framerate
Active area	17.5 mm x 11.8 mm
Sensor diagonal dimension	21.1 mm
Pixel size	13.7 μ m
A/D conversion	8 Bit
Dynamic	48 dB
Sensitivity	25 V/lux x s @ 525 nm
Trigger modes	internal free-run, switch, rising or falling edge, pre- and post-trigger
Power	12 VDC
Weight	1400 g without mount
Dimensions	150 mm x 92 mm x 92 mm
Housing	lightweight anodised aluminium
SSD harddrive bay	data storage and backup
PC software	TimeViewer for Windows (support for version 7, 8 and 10) for capture, video playback, export, image analysis with object tracking
Scope of delivery	Camera with 256 GB SSD, TimeViewer, Power supply, Docking station, WiFi dongel, GigE-cable and manual

OPTIONS

CR-S-FM	F-Mount lens adapter
CR-S-FMG	F-Mount lens adapter with aperture control
CR-S-CM	C-Mount lens adapter

TECHNICAL DRAWING



CONTACT INFORMATION

Optronis GmbH
Ludwigstraße 2
77694 Kehl
Germany

Phone: +49 7851 91 26 - 0
Fax: +49 7851 91 26 - 10
info@optronis.com
www.optronis.com

The information given herein is believed to be reliable, however Optronis makes no warranties as to its accuracy or completeness. Data sheet is subject to modifications at any time. 10/2018

officially distributed by



Kottonau AG
Rinderweid 1
8707 Uetikon am See
T +41 (0)44 790 15 10
<http://www.kottonau.ch>